

THE PLAN

Here are images of the plan for re-imagining our church, which were introduced at a recent series of parish meetings. Along with the images are brief descriptions. It's important to note that colors, finishings and other specific details shown here are meant to "set the scene" and may very well be modified during the more intensive design phase. Also, the information presented on Page 1 provides an essential context for the plan and what is shown here.



THIS IS THE VIEW from the main entranceway. A wide center aisle establishes the "integral" connection between the baptismal font and the altar. The relocation and centering of the primary sanctuary also identifies "the altar as the primary focal point." When someone enters the church, the altar will be the first thing they see, or they'll see the cross, which will guide their eye to the altar. The pews begin at steps below the lower mezzanine section.

The brown cross design was inspired by a concrete cross against the original east side of the church. The stained glass windows are currently obstructed by the choir loft and stairways, all of which will be removed in this project.

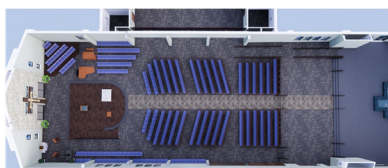
A RAMP will provide easy and secure access to the sanctuary for readers, eucharistic ministers and presiders. Again, remember that the furnishing, flooring and other features are not final, although the altar will be similar in size to what is shown.

The tabernacle will be re-located from the Blessed Sacrament Chapel to this area near the altar. It will be more prominently displayed than is shown. This area will feature comfortable chairs and kneelers for people to pray before the Blessed Sacrament.



THE SOUTH ENTRANCE will continue to provide easy, one-level access for people of limited mobility. While it is not shown here, seating in the area just inside the doors will be designed to readily accommodate walkers, wheelchairs and motorized devices. The desire is that everyone can be accommodated comfortably in the main body of the church. The ramps into the main body of the church also are streamlined for easier access.

The wall of windows and doors will separate the south entrance/gathering space from the main body of the church, although they can all be opened to allow for overflow seating in that area when needed.



THERE WILL BE SEATING for 400 in the main body of the church, which will include pews with kneelers on either side of the center aisle, and chairs on either side of the sanctuary. Overflow seating in the mezzanine, baptistry and south entrance will accommodate more than 600 worshippers.

WHAT THE PLAN ACCOMPLISHES

- ◊ Connects baptismal font and altar as identified in *Built of Living Stones*.
- ◊ Establishes the altar as the primary focal point of the church, as specified in *Built of Living Stones*.
- ◊ Creates a prominent cross and crucifix and moves the tabernacle closer to the altar, while retaining an area for personal prayer.
- ◊ Creates a ramp for access to the altar area, as well as enhances access to the general seating area of the church.
- ◊ Removes the loft and stairways from the eastern wall to reveal existing windows and accommodate a prominent cross feature and expanded sanctuary.
- ◊ Adds glass doors separating the sanctuary from the south entrance.
- ◊ Re-locates the ramp from the baptistry to the mezzanine and main body of the church.
- ◊ New light fixtures and controls.
- ◊ New sound technology, while incorporating new video technology.
- ◊ All new flooring and pews.
- ◊ New paint for walls and ceiling.

THE COST

A year ago the estimated cost of the interior construction and renovation was \$850,000. With rising building costs, the estimated cost has risen to \$1,071,000, although costs are expected to moderate by fall. The parish has \$912,834 for this project from the 2017 capital campaign and other donations. The Finance Council is considering various options for raising the additional funds, once there are more concrete cost estimates.

MOVING AHEAD

More intense design work has already begun and will continue and intensify through the fall. Watch for updates on that process. Ellis Construction anticipates work beginning in early 2022, with weekend Masses celebrated in McKillip Hall during the several months of construction.

RE-IMAGINING FAQ

Frequently Asked Questions at recent parish meetings

Aren't we returning to the design of the 1950 church with people sitting so far from the altar?

While similar to the original layout of the church, the new plan brings people much closer than in 1950 and includes chairs on either side of the main sanctuary. Distance from the altar will be comparable to the existing distance from the altar to chairs in the far corners of the mezzanine and south entrance. Ultimately, people who want to sit close can sit close and those who prefer distance can sit further away.

The angled pews in the current design will help instill a sense of community, as will the assembly now gathering as one body in the church, rather than in separate sections.

Why can't we keep the church the way it is?

This will be the third major change in our church since it was built in 1950, and each of them was rather significant.

The construction of the baptismal font in 2000 essentially determined whatever renovation would occur in the future. It is the most dynamic feature of the church, but at this point vastly overpowers the altar. The U.S. Bishops' guidelines are clear about an integral link between the font and altar, and that's a key element of this project. The existing structure of the church

doesn't allow for many other options.

While there were suggestions to modify the sanctuary in its current location, that would have required expansion to accommodate a ramp and

project provides a good moment to consider how we can, as a parish, do that better.

Will there be enough exits without the east entrance?

Yes. The remaining



the loss of several rows of pews, and would not have developed a connection to the font or enhanced the altar's prominence.

Is the new altar platform going to be high enough?

The plan shows the altar a couple inches higher than the current altar. That being said, this concern, as with many details, will be given further consideration.

Where will the Stations of the Cross be located?

Some decisions, such as this, are best left until construction is finished and a helpful place for them seems more clear. Ideally, the Stations will be placed so people can walk and pray from station to station.

Shouldn't we give this money to the poor?

Yes. It's not a matter of one or the other, but both. The Church has always struggled with this dilemma of creating and maintaining a noble place of worship and honoring the gospel imperative of caring for the least of our sisters and brothers. This

south, west and school exits are sufficient.

Won't the glass behind the altar be a distraction?

Meant to bring as much natural light into the church as possible, this concern will be given further review.

Will there be a cry room?

In many newer churches the Gathering Space is meant as a place where young parents bring children needing a break from Mass, which is essentially already true in our church. Both the Gathering Space and south entrance will be welcoming places for parents.

Will the floor be tile, carpet or wood?

It might be a combination, but specifics are among the many details yet to be decided. It's very likely the center aisle will be tile, similar to the font area, a design element connecting the font and altar.

If you have a question, send it to mail@stanneswausau.org. Answers will be featured in future newsletters and bulletins, and at stanneswausau.org/reimagining.

DIVINE RENOVATION

The infrastructure of discipleship

When the parish staff meets on Tuesday mornings we begin by reflecting on the Sunday gospel, we list parishioners in need



of prayer, and then we discuss a book or article. We recently finished Pope Francis' encyclical, *Fratelli Tutti*, and this month began discussing a book I discovered, I hate

to confess, as a recommendation from Amazon.

In the midst of our Re-imagining revival with the end of Covid, the book's title — *Divine Renovation* — got my attention. It certainly describes what we will be about in the upcoming months, but I knew before I even opened the cover that this book wasn't about architecture and construction. Rather, the author, a pastor from Nova Scotia, addresses the challenges and possibilities of the community gathered within the walls of a church; the author offering a plan for reinforcing, or maybe, if necessary, re-imagining the infrastructure of faith and discipleship.

We've barely cracked open the cover, but it seems it will be a helpful and important companion for our staff — and possibly the Pastoral Council — as we move further beyond the pandemic and as we embark upon re-creating the interior of our church. It will be an important opportunity to address as a parish the foundations of our lives as baptized Christians and to assess our need as disciples for some "divine renovation."

TL

ST. ANNE PARISH

700 W. Bridge St.
Wausau WI 54401

Electronic Service Requested

Non-Profit Org.
U.S. Postage
PAID
Wausau WI
Permit No. 467

MASS IN CHURCH & ONLINE

Mass is celebrated every Lord's Day at 4 p.m. Saturday, 8:30 a.m. and 10:30 a.m. Sunday. No registration, masks or other restrictions. And, we continue our online Mass with links included in the Wednesday email and at stanneswausau.org.

LOOKING AHEAD

>> Aug. 9-13 — Middle School NCIS Service Week

This local service experience brings youth entering grades 6-8 into a fun and meaningful atmosphere while serving the larger community. Register and find more information at stanneswausau.org or contact John Schmitt, johns@stanneswausau.org. Also, adults are needed to help facilitate this program. To learn more, contact John.

>> Aug. 27 — St. Anne Golf Outing

This parish tradition returns with a day of golf and concluding with dinner at Greenwood Hills Golf Club. Registration begins at 10 a.m., with a shotgun start at 11. The \$65 cost includes 18 holes of golf, cart, hole events and prizes, dinner and door prizes. Registration forms are in the entranceway of church and at stanneswausau.org. The registration deadline is Aug. 6. And, it is possible to come for dinner and skip the golfing.

>> Sept. 11/12 — We're Back Weekend & St. Anne Family Picnic

We'll celebrate a return from the pandemic and a new beginning with a cookout for all parishioners after the 10:30 a.m. Mass on the Grass. Watch for more information in the Quick Things email and bulletin. The 6 p.m. Sunday Mass also returns this weekend.